

ACTUAL MATERIALS SUPPLIED IN THIS HOME ARE PER CLIENT CONTRACT



MOOSEHEAD
Cedar Log Homes
P.O. Box 1285
Greenville, ME 04441

Email: design@mchl.net
www.mchl.net
Tel: 207-695-3730 Fax: 207-695-4428

Architect/Engineer Stamp:

REVISIONS		
NO.	DESCRIPTION	DATE DRN

Smith Office
Greenville, NY

Date of Issue: 1/15/2009
Drawn By: AS
Window Company:
Window Series:
Window Color:
Scale: AS NOTED
Project No.:

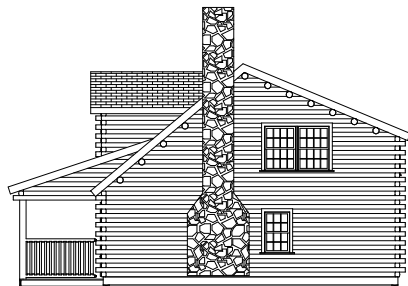
Sheet Title:
ELEVATIONS
Sheet Number:
0



Front (Model)
1/8" = 1'-0"



Left (Model)
1/8" = 1'-0"



Right (Model)
1/8" = 1'-0"



Rear (Model)
1/8" = 1'-0"

Smith-MARKETING.lbk1

Undefined Drawing Path

1:43 PM 1/15/2009

ACTUAL MATERIALS SUPPLIED IN THIS HOME ARE PER CLIENT CONTRACT



MOOSEHEAD
Cedar Log Homes
P.O. Box 1285
Greenville, ME 04441

Email: design@mchl.net
www.mchl.net
Tel: 207-695-3730 Fax: 207-695-4428

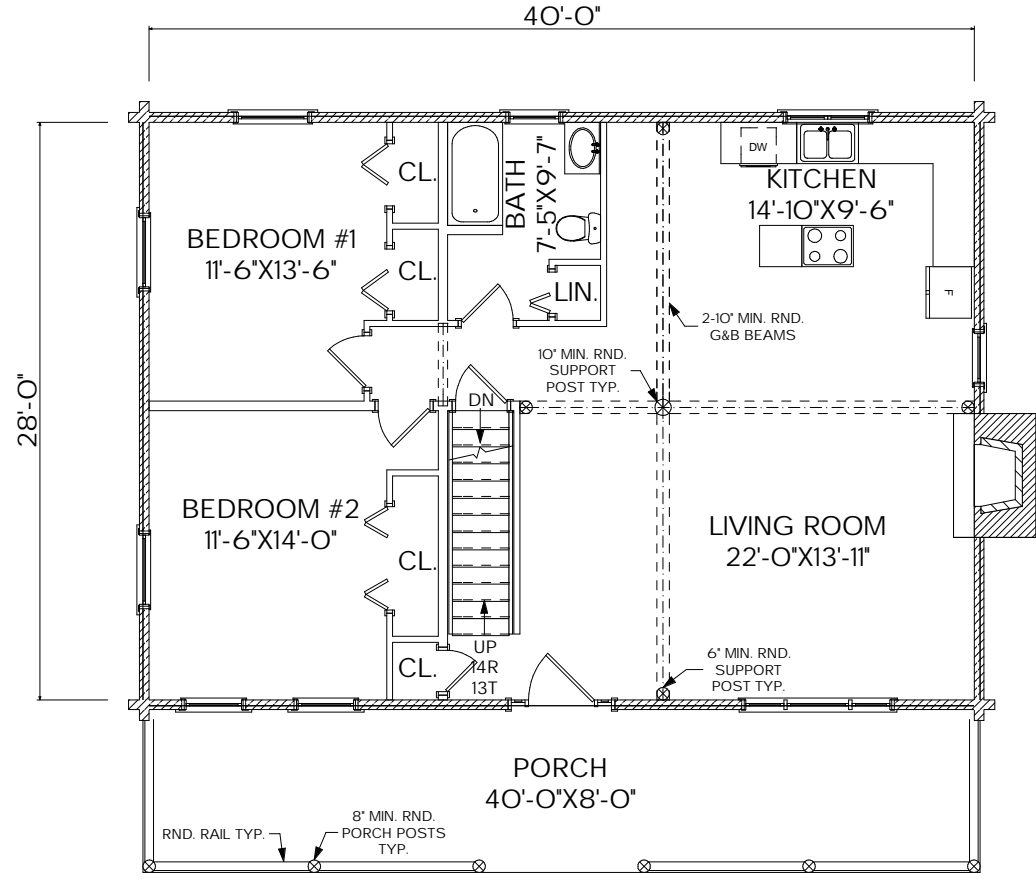
Architect/Engineer Stamp:

REVISIONS		
NO.	DESCRIPTION	DATE DRN

Smith Office
Greenville, NY

Date of Issue: 1/15/2009
Drawn By: AS
Window Company:
Window Series:
Window Color:
Scale: AS NOTED
Project No.:

Sheet Title:
1ST FLOOR PLAN
Sheet Number:
1



1. First floor
1/4" = 1'-0"

Smith-MARKETING.libk1

Undefined Drawing Path

1:43 PM 1/15/2009



MOOSEHEAD
Cedar Log Homes
P.O. Box 1285
Greenville, ME 04441

Email: design@mchl.net
www.mchl.net
Tel: 207-695-3730 Fax: 207-695-4428

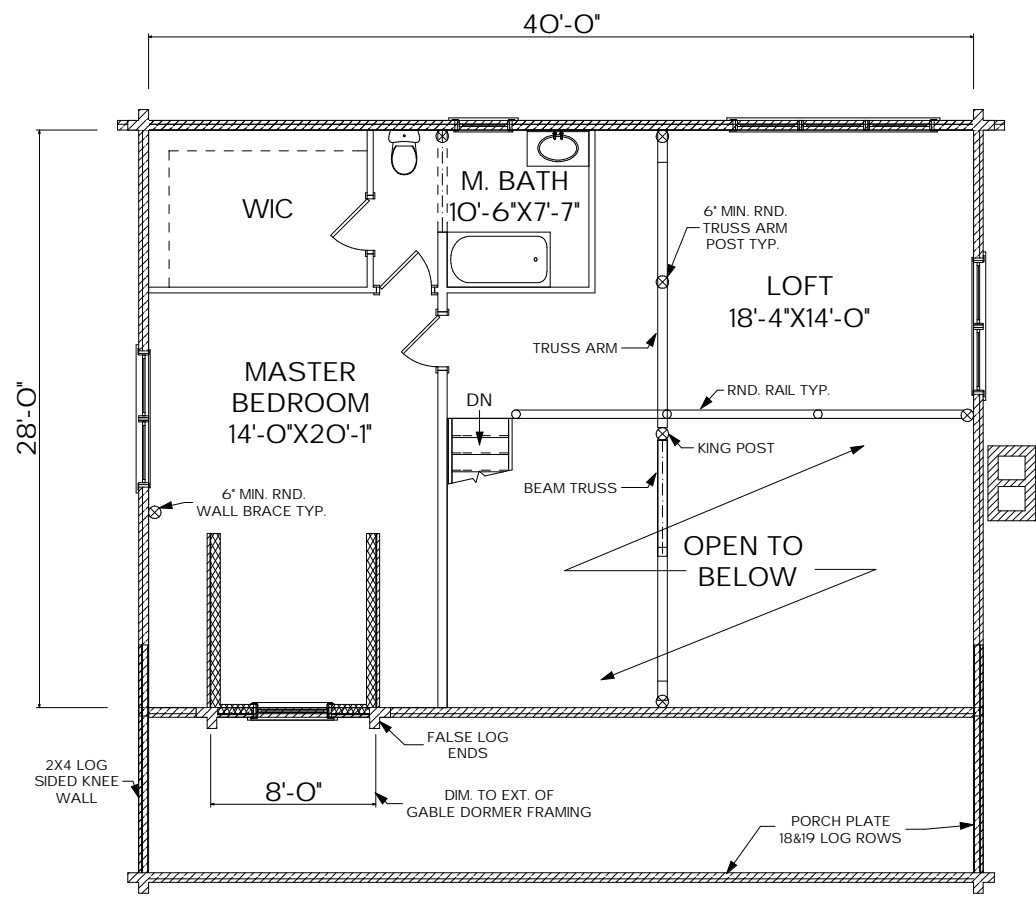
Architect/Engineer Stamp:

REVISIONS		
NO.	DESCRIPTION	DATE DRN

Smith Office
Greenville, NY

Date of Issue: 1/15/2009
Drawn By: AS
Window Company:
Window Series:
Window Color:
Scale: AS NOTED
Project No.:

Sheet Title:
SECOND FLOOR PLAN
Sheet Number:
2



3. Second floor
1/4" = 1'-0"

Smith-MARKETING.lbk1

Undefined Drawing Path

1:43 PM 1/15/2009